

Provides Quick & Easy Connections

Connects PEX, CPVC, copper and other copper tube size products.

Facts on Genova UNIVERSAL Hot & Cold Water Supply Fittings

Universal Fittings are made of Chlorinated Polyvinyl Chloride (CPVC) and are approved for use within buildings for potable hot and cold water distribution. Whether it's an installation of a new hot water heater or the replacement of a faucet, our Universal Fitting System can be used in conjunction with your choice of copper tube size (CTS) water supply tubing. Now anyone can easily complete all plumbing repairs and new installations in residential, marine, and RV applications quickly, easily and inexpensively.

CPVC products are made of superior energy saving thermoplastic materials which are easy to handle and outperform all existing metal water systems. CPVC is impervious to corrosion and mineral buildup within the pipe, resulting in a lifetime of worry free performance.

Genova Universal fittings are manufactured with strict quality control standards. They meet ASTM D3309 and are designed to withstand continuous operating pressures of 200 psi at 73°F or 100 psi at 180° F.

Before beginning any plumbing project check your local plumbing codes for approvals.

Universal Fitting Installation

- Cut tubing square to length, remove any burrs
- Mark tubing 1¼" from end
- Lubricate with liquid soap only
- Make sure all component parts are correctly assembled-DO NOT INSTALL IF ANY COMPONENT PARTS ARE MISSING
- Push tubing fully into the nut past the "O-Ring" seal, to seated position
- Hand Tighten only
- The mark should align with the outside edge of the fitting

Note the order in which each of the component parts are installed. Be sure all parts are present and in this order before installing. Avoid installation where product will be exposed to excessive sunlight.



Caution

Metal gripper ring edges are sharp, handle with care.

Genova Wrote the Book on Plastic Plumbing

This fully illustrated text makes you the plumbing expert. See how easy and economical it is to plumb your whole house or addition, install a sump pump and even build a sewer-septic system utilizing today's modern plastic piping materials.

The "Do-It-Yourself" book is the most comprehensive book yet on modern plumbing installation and deserves a prominent place in your "how-to" library.

If not available in your dealer's how-to-library, please clip out this order form and send for your guide into the world of easy-to-do plumbing.



\$9.95 plus \$6.00 handling each
(Michigan residents add 6% sales tax)

Please send me _____ copy(s)

- Payment enclosed
 Bill my charge card

___ VISA ___ MASTERCARD ___ AMERICAN EXPRESS

SECURITY CODE _____

Credit Card# _____ EXP. _____

Name _____

Address _____

City, State, ZIP _____

Signature _____

(Required for charge card purchases)

Genova
PRODUCTS

7034 E. Court Street | Box 309 | Davison, MI 48423-0309
1-800-521-7488 | www.genovaproducts.com

Form No. 252220 6/10

Universal

Water Supply for Home Plumbing

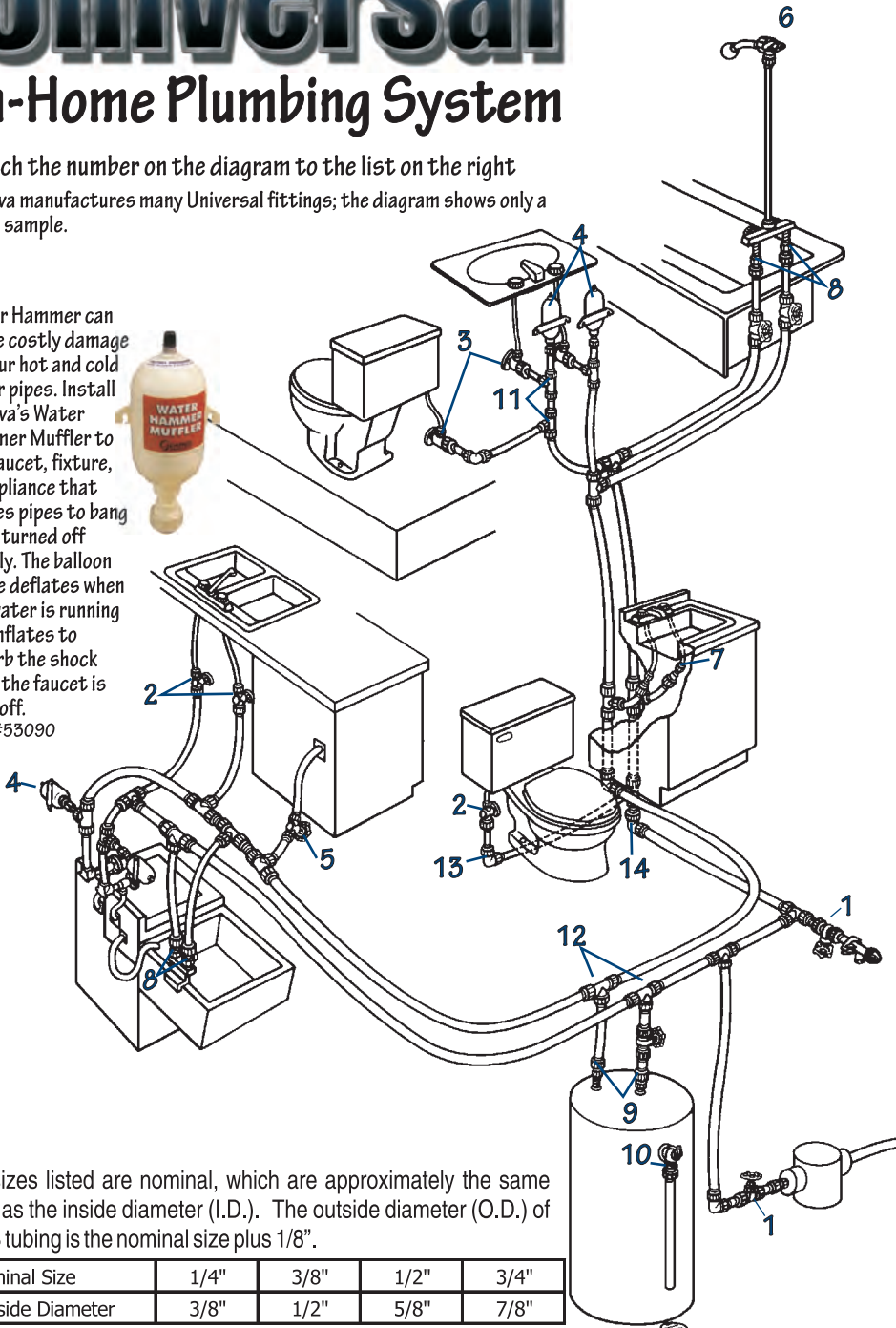
HOT & COLD

Genova PRODUCTS

Universal In-Home Plumbing System

Match the number on the diagram to the list on the right
 Genova manufactures many Universal fittings; the diagram shows only a small sample.

Water Hammer can cause costly damage to your hot and cold water pipes. Install Genova's Water Hammer Muffler to any faucet, fixture, or appliance that causes pipes to bang when turned off rapidly. The balloon inside deflates when the water is running and inflates to absorb the shock when the faucet is shut off.
 Part #53090



All sizes listed are nominal, which are approximately the same size as the inside diameter (I.D.). The outside diameter (O.D.) of CTS tubing is the nominal size plus 1/8".

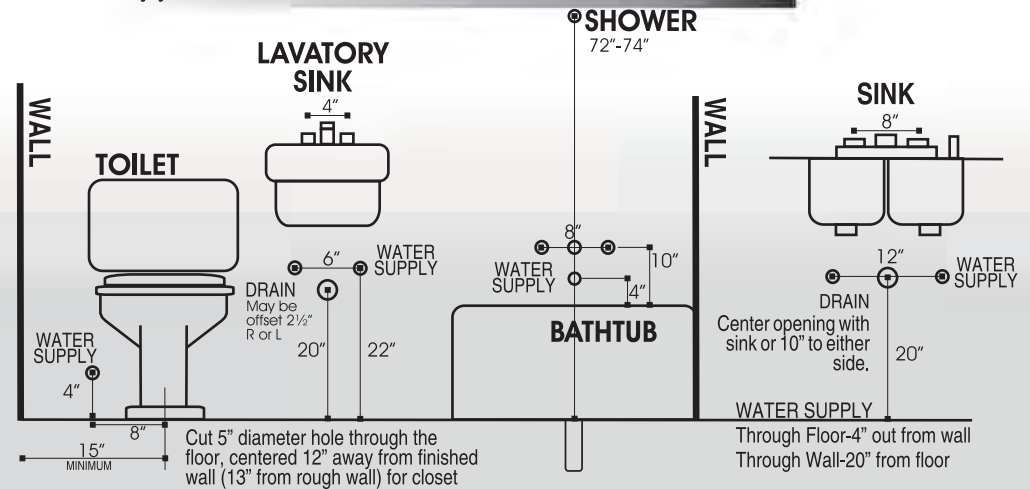
Nominal Size	1/4"	3/8"	1/2"	3/4"
Outside Diameter	3/8"	1/2"	5/8"	7/8"

Water Supply Sizing Table

Fixture	Pipe Size	Poly Riser Supply Tube Size
Toilet	1/2"	1/4"
Lavatory	1/2"	1/4"
Bathtub	1/2"	
Shower	1/2"	
Service Entrance Main	3/4"	
Water Heater	3/4"	

Universal Fittings

1	53027	3/4"	Gate Valve
2	53030	1/2" x 1/4"	Straight supply Valve
3	53065	1/2" x 1/4"	Angle Supply Valve
4	53090	1/2"	Water Hammer Muffler
5	54005	1/2"	Line Valve
6	54055	1/2"	Female Wing Elbow
7	54153	1/2" x 1/4"	Coupling
8	54305	1/2"	Female Adapter
9	54307	3/4"	Female Adapter
10	54407	3/4"	Male Adapter
11	54505	1/2"	Tee
12	54507	3/4"	Tee
13	54705	1/2"	90° Elbow
14	54707	3/4"	90° Elbow



You Can Plumb-It-Yourself

800.521.7488